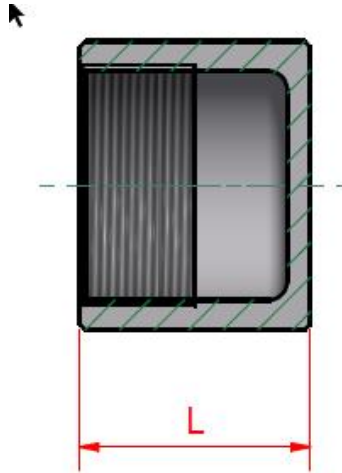


# MILD STEEL SCREWED PIPE FITTINGS

## BS EN 10241



**Round cap**



Nominal bore		Overall length dim. L	Weight each
Metric	Imperial	mm	kgs
6mm	1/8"	19	0.02
8mm	1/4"	24	0.04
10mm	3/8"	27	0.05
15mm	1/2"	37	0.10
20mm	3/4"	38	0.15
25mm	1"	44	0.26
32mm	1 1/4"	51	0.40
40mm	1 1/2"	54	0.60
50mm	2"	60	0.95
65mm	2 1/2"	67	1.45
80mm	3"	73	1.98
100mm	4"	86	3.71
125mm	5"	98	2.79
150mm	6"	98	4.01