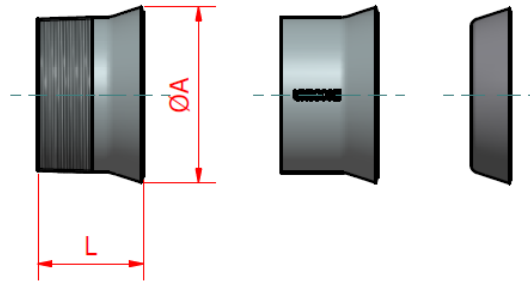


Threads are BSP taper to ISO 7.1 unless otherwise requested.



### Short screwed adaptor



### Weld on piece



### Blank end



Nominal bore		Optional diameters dim. A		Short scrd. adaptor and weld on piece		Blank ends
				Length dim. L	Weight each	Weight each
Metric	Imperial	Metric	Imperial	mm	kgs	kgs
80mm	3"	89	3 1/2"	76	0.60	0.31
100mm	4"	114	4 1/2"	76	0.69	0.48
125mm	5"	140	5 1/2"	76	1.30	0.65
150mm	6"	165*	6 1/2"*	76	1.60	0.90

Nominal bore		Short male adaptor		Blank end	
Metric	Imperial	Mild steel blue painted	Stainless steel 304L	Mild steel zinc flake	Stainless steel 304L
80mm	3"	USCRD080X076	USSSCRD080X076	UBE080	USSBE080
100mm	4"	USCRD100X076	USSSCRD100X076	UBE100	USSBE100
125mm	5"	USCRD125X076	USSSCRD125X076	UBE125	USSBE125
150mm	6"	USCRD150X076	USSSCRD150X076	UBE150	USSBE150

Nominal bore		Weld on piece		Product code	
Metric	Imperial	Outside diameter		Mild steel self colour	Stainless steel 304L
80mm	3"	76mm	3"	UWOPOD080	USSWOPOD080
		89mm	3 1/2"	UWOPNB080	USSWOPNB080
100mm	4"	102mm	4"	UWOPOD100	USSWOPOD100
		114mm	4 1/2"	UWOPNB100	USSWOPNB100
125mm	5"	127mm	5"	UWOPOD125	USSWOPOD125
		140mm	5 1/2"	UWOPNB125	USSWOPNB125
150mm	6"	152mm	6"	UWOPOD150	USSWOPOD150
		165mm	6 1/2"	UWOPNB150	N/A
		168mm	6 5/8"	N/A	USSWOPNB150