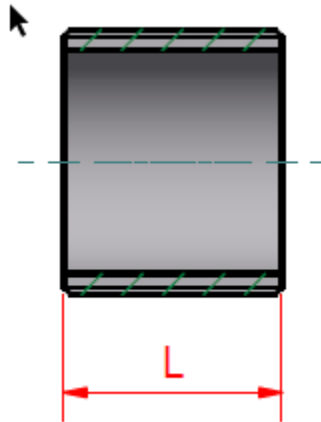


MILD STEEL SCREWED PIPE FITTINGS

BS EN 10241



BSP parallel threads to ISO 7.1

Running nipple



Nominal bore		Overall length dim. L	Approx. wall thickness	Weight each
Metric	Imperial	mm	mm	kgs
6mm	1/8"	13	2.0	0.01
8mm	1/4"	19	2.9	0.01
10mm	3/8"	21	2.9	0.01
15mm	1/2"	27	3.2	0.02
20mm	3/4"	30	3.2	0.03
25mm	1"	33	4.1	0.06
32mm	1 1/4"	38	4.1	0.09
40mm	1 1/2"	38	4.1	0.12
50mm	2"	48	4.5	0.19
65mm	2 1/2"	51	4.5	0.26
80mm	3"	57	4.9	0.33
100mm	4"	70	5.4	0.64
125mm	5"	78	5.4	0.91
150mm	6"	78	5.4	1.06