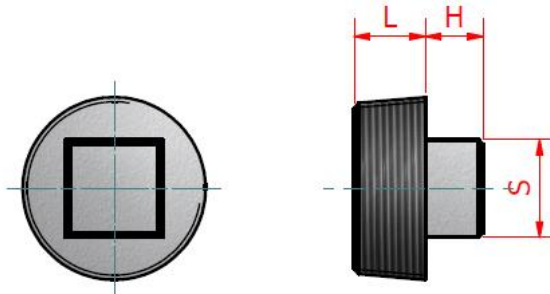


MILD STEEL SCREWED PIPE FITTINGS

BS EN 10241



Square head plug



Nominal bore		Minimum length dim. L	Size of square dim. S	Minimum height of square dim. H	Weight each
Metric	Imperial	mm	mm	mm	kgs
6mm	1/8"	6.5	6	6	0.01
8mm	1/4"	9.7	9	6	0.02
10mm	3/8"	10.1	11	10	0.03
15mm	1/2"	13.2	13	10	0.05
20mm	3/4"	14.5	14	12	0.08
25mm	1"	16.8	17	12	0.12
32mm	1 1/4"	19.1	22	16	0.23
40mm	1 1/2"	19.1	27	16	3.00
50mm	2"	23.4	32	19	0.60
65mm	2 1/2"	26.7	37	19	1.02
80mm	3"	29.8	37	22	1.42
100mm	4"	35.8	46	25	2.44