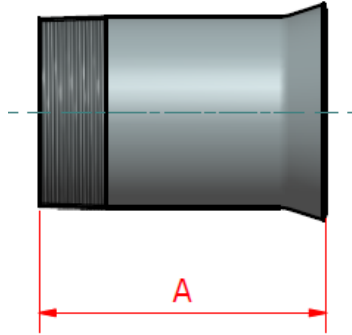


Threads are BSP taper to ISO 7.1 unless otherwise requested



Long male screwed adaptor



Nominal bore		Outside diameter		Length dim. A	Weight each
Metric	Imperial	Metric	Imperial	mm	kgs
80mm	3"	89	3 1/2"	150	1.60
100mm	4"	114	4 1/2"	170	2.15
125mm	5"	140	5 1/2"	170	3.05
150mm	6"	165*	6 1/2"*	170	3.60

Nominal bore		Product code	
Metric	Imperial	Mild steel blue painted	Stainless steel 304L
80mm	3"	USCRD080	USSSCRD080
100mm	4"	USCRD100	USSSCRD100
125mm	5"	USCRD125	N/A
150mm	6"	USCRD150	N/A