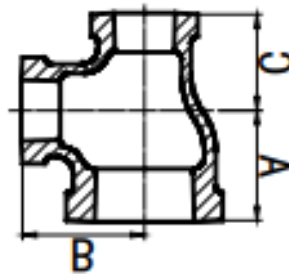


**Reducing tee
(reducing on branch only)
Fig. 130R**



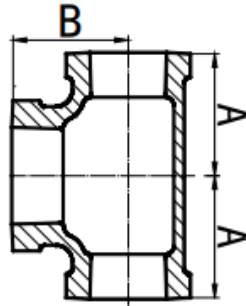
| Nominal bore | | Length Centre to face dim. A | Length to centre to face dim. B | Weight each | Nominal bore | | Length Centre to face dim.A | Length to centre to face dim.B | Weight each |
|--------------|---------------|------------------------------------|---------------------------------------|-------------|--------------|---------------|-----------------------------------|--------------------------------------|-------------|
| Metric | Imperial | mm | mm | kgs | Metric | Imperial | mm | mm | kgs |
| 8x6 | 1/4x1/8 | 18.5 | 19 | 0.06 | 50x20 | 2x3/4 | 40 | 50 | 0.74 |
| 10x8 | 3/8x1/4 | 22 | 22.5 | 0.09 | 50x25 | 2x1 | 44 | 52 | 0.74 |
| 15x6 | 1/2x1/8 | 22 | 23 | 0.05 | 65x15 | 2 x 1 1/4 | 48 | 54 | 0.82 |
| 15x8 | 1/2x1/4 | 24 | 24 | 0.12 | 65x20 | 2 x 1 1/2 | 52 | 55 | 0.88 |
| 15x10 | 1/2x3/8 | 26 | 26 | 0.13 | 65x25 | 2 1/2 x 1/2 | 40 | 56 | 1.33 |
| 20x8 | 3/4x1/4 | 26 | 27 | 0.17 | 65x32 | 2 1/2 x 3/4 | 43 | 57 | 1.01 |
| 20x10 | 3/4x3/8 | 28 | 28 | 0.19 | 65x40 | 2 1/2 x 1/2 | 47 | 60 | 1.09 |
| 20x15 | 3/4x1/2 | 30 | 31 | 0.18 | 65x50 | 2 1/2 x 1 1/4 | 52 | 62 | 1.17 |
| 25x8 | 1x1/4 | 28 | 31 | 0.22 | 80x15 | 2 /12 x 1 1/2 | 55 | 63 | 1.24 |
| 25x10 | 1x3/8 | 30 | 32 | 0.29 | 80x20 | 2 1/2 x 2 | 61 | 66 | 1.37 |
| 25x15 | 1x1/2 | 32 | 34 | 0.28 | 80x25 | 3 x 1/2 | 42 | 64 | 1.62 |
| 25x20 | 1 x 3/4 | 35 | 36 | 0.27 | 80x32 | 3 x 3/4 | 43 | 65 | 1.4 |
| 32x10 | 1 1/4 x 3/8 | 32 | 36 | 0.33 | 80x40 | 3 x 1 | 51 | 67 | 1.47 |
| 32x15 | 1 1/4 x 1/2 | 34 | 38 | 0.35 | 80x50 | 3 x 1 1/4 | 55 | 70 | 1.59 |
| 32x20 | 1 1/4x3/4 | 36 | 41 | 0.40 | 80x65 | 3 x 1 1/2 | 58 | 71 | 1.67 |
| 32x25 | 1 1/4 x 1 | 40 | 42 | 0.43 | 100x15 | 3 x 2 | 64 | 73 | 1.81 |
| 40x10 | 1 1/2 x 3/8 | 34 | 39 | 0.50 | 100x20 | 3 x 2 1/2 | 72 | 76 | 2.14 |
| 40x15 | 1 1/2 x 1/2 | 36 | 42 | 0.44 | 100x25 | 4 x 1 | 56 | 81 | 2.49 |
| 40x20 | 1 1/2 x 3/4 | 38 | 44 | 0.47 | 100x32 | 4 x 1 1/4 | 60 | 84 | 2.63 |
| 40x25 | 1 1/2 x 1 | 42 | 46 | 0.51 | 100x40 | 4 x 1 1/2 | 61 | 84 | 2.76 |
| 40x32 | 1 1/2 x 1 1/4 | 46 | 48 | 0.58 | 100x50 | 4 x 2 | 70 | 86 | 2.91 |
| 50x10 | 2 x 3/8 | 36 | 46 | 0.60 | 100x65 | 4 x 2 1/2 | 84 | 92 | 3.23 |
| 50x15 | 2 x 1/2 | 38 | 48 | 0.65 | 100x80 | 4 x 3 | 82 | 90 | 3.47 |



**Reducing tee
(reducing 2 sizes)
Fig. 130R**



| Nominal bore | | Length Centre to face dim. A | Length to centre to face dim. B | Length to centre to face dim. C | Weight each | Nominal bore | | Length Centre to face dim. A | Length to centre to face dim. B | Length to centre to face dim. C | Weight each |
|--------------|-------------------|------------------------------|---------------------------------|---------------------------------|-------------|--------------|-------------------|------------------------------|---------------------------------|---------------------------------|-------------|
| Metric | Imperial | mm | mm | mm | kgs | Metric | Imperial | mm | mm | mm | kgs |
| 20x15x15 | 3/4x1/2x1/2 | 30 | 31 | 28 | 0.20 | 40X25X40 | 1 1/2x1x1 1/2 | 50 | 50 | 46 | 0.67 |
| 20x15x20 | 3/4x1/2x3/4 | 33 | 33 | 31 | 0.22 | 40X32X40 | 1 1/2x1 1/4x1 1/2 | 50 | 50 | 48 | 0.72 |
| 25x15x15 | 1x1/2x1/2 | 32 | 34 | 28 | 0.23 | 40X25X32 | 1 1/2x1x1 1/4 | 45 | 47 | 42 | 0.59 |
| 25x20x20 | 1x3/4x3/4 | 35 | 36 | 33 | 0.39 | 40X32X15 | 1 1/2x1 1/4x1/2 | 36 | 42 | 34 | 0.48 |
| 25x15x25 | 1x1/2x1 | 32 | 34 | 28 | 0.33 | 40X32X20 | 1 1/2x1 1/4x3/4 | 38 | 44 | 36 | 0.52 |
| 25x20x25 | 1x3/4x1 | 38 | 38 | 36 | 0.36 | 40X32X25 | 1 1/2x1 1/4x1 | 42 | 46 | 40 | 0.58 |
| 25X20X15 | 1x3/4x1/2 | 35 | 36 | 33 | 0.36 | 50X25X25 | 2x1x1 | 44 | 51 | 38 | 0.66 |
| 32x15x15 | 1 1/4x1/2x1/2 | 34 | 38 | 27 | 0.35 | 50X32X32 | 2x1 1/4x1 1/4 | 48 | 54 | 45 | 0.79 |
| 32x20x20 | 1 1/4x3/4x3/4 | 36 | 41 | 33 | 0.40 | 50X40X40 | 2x1 1/2x1 1/2 | 52 | 55 | 50 | 0.92 |
| 32x25x25 | 1 1/4x1/1 | 40 | 42 | 38 | 0.43 | 50X15X50 | 2x1/2x2 | 57 | 57 | 48 | 0.69 |
| 32x15x32 | 1 1/4x1/2x1 1/4 | 45 | 45 | 38 | 0.35 | 50X20X50 | 2x3/4x2 | 58 | 58 | 50 | 0.94 |
| 32x20x32 | 1 1/4x3/4x1 1/4 | 45 | 45 | 41 | 0.40 | 50X25X50 | 2x1x2 | 58 | 58 | 52 | 1.02 |
| 32x25x32 | 1 1/4x1x1 1/4 | 45 | 45 | 42 | 0.43 | 50X32X50 | 2x1 1/4x2 | 58 | 58 | 54 | 1.04 |
| 32X20X15 | 1 1/4x3/4x1/2 | 40 | 43 | 37 | 0.35 | 50X40X50 | 2x1 1/2x2 | 58 | 58 | 55 | 1.09 |
| 32X20X25 | 1 1/4x3/4x1 | 40 | 42 | 36 | 0.51 | 50X40X15 | 2x1 1/2x1/2 | 38 | 48 | 36 | 0.65 |
| 32X25X20 | 1 1/4x1x3/4 | 36 | 41 | 35 | 0.41 | 50X40X20 | 2x1 1/2x3/4 | 40 | 50 | 39 | 0.65 |
| 40x20x20 | 1 1/2x3/4x3/4 | 38 | 43 | 32 | 0.44 | 50X40X25 | 2x1 1/2x1 | 44 | 52 | 42 | 0.76 |
| 40x25x25 | 1 1/2x1x1 | 42 | 46 | 38 | 0.53 | 50X40X32 | 2x1 1/2x1 1/4 | 48 | 54 | 46 | 0.84 |
| 40x32x32 | 1 1/2x1 1/4x1 1/4 | 46 | 48 | 45 | 0.65 | 65X50X50 | 2 1/2x2x2 | 61 | 66 | 57 | 1.91 |
| 40x15x40 | 1 1/2x1/2x1 1/2 | 50 | 50 | 42 | 0.61 | 65X40X65 | 2 1/2x1 1/2x2 1/2 | 69 | 69 | 64 | 1.7 |
| 40X20X40 | 1 1/2x3/4x1 1/2 | 50 | 50 | 44 | 0.63 | 65X50X65 | 2 1/2x2x2 1/2 | 67 | 67 | 65 | 1.91 |



Tee
(increasing on branch)
Fig. 130R



| Nominal bore | | Length Centre to face dim. A | Length to centre to face dim. B | Length to centre to face dim. C | Weight each | Nominal bore | | Length Centre to face dim. A | Length to centre to face dim. B | Length to centre to face dim. C | Weight each |
|--------------|----------------|------------------------------------|---------------------------------------|---------------------------------------|----------------|--------------|----------------|------------------------------------|---------------------------------------|---------------------------------------|----------------|
| Metric | Imperial | mm | mm | mm | kgs | Metric | Imperial | mm | mm | mm | kgs |
| 20x15x15 | 3/4x1/2x1/2 | 30 | 31 | 28 | 0.20 | 40X25X40 | 11/2x1x11/2 | 50 | 50 | 46 | 0.67 |
| 20x15x20 | 3/4x1/2x3/4 | 33 | 33 | 31 | 0.22 | 40X32X40 | 11/2x11/4x11/2 | 50 | 50 | 48 | 0.72 |
| 25x15x15 | 1x1/2x1/2 | 32 | 34 | 28 | 0.23 | 40X25X32 | 11/2x1x11/4 | 45 | 47 | 42 | 0.59 |
| 25x20x20 | 1x3/4x3/4 | 35 | 36 | 33 | 0.39 | 40X32X15 | 11/2x11/4x1/2 | 36 | 42 | 34 | 0.48 |
| 25x15x25 | 1x1/2x1 | 32 | 34 | 28 | 0.33 | 40X32X20 | 11/2x11/4x3/4 | 38 | 44 | 36 | 0.52 |
| 25x20x25 | 1x3/4x1 | 38 | 38 | 36 | 0.36 | 40X32X25 | 11/2x11/4x1 | 42 | 46 | 40 | 0.58 |
| 25X20X15 | 1x3/4x1/2 | 35 | 36 | 33 | 0.36 | 50X25X25 | 2x1x1 | 44 | 51 | 38 | 0.66 |
| 32x15x15 | 11/4x1/2x1/2 | 34 | 38 | 27 | 0.35 | 50X32X32 | 2x11/4x11/4 | 48 | 54 | 45 | 0.79 |
| 32x20x20 | 11/4x3/4x3/4 | 36 | 41 | 33 | 0.40 | 50X40X40 | 2x11/2x11/2 | 52 | 55 | 50 | 0.92 |
| 32x25x25 | 11/4x1/1 | 40 | 42 | 38 | 0.43 | 50X15X50 | 2x1/2x2 | 57 | 57 | 48 | 0.69 |
| 32x15x32 | 11/4x1/2x11/4 | 45 | 45 | 38 | 0.35 | 50X20X50 | 2x3/4x2 | 58 | 58 | 50 | 0.94 |
| 32x20x32 | 11/4x3/4x11/4 | 45 | 45 | 41 | 0.40 | 50X25X50 | 2x1x2 | 58 | 58 | 52 | 1.02 |
| 32x25x32 | 11/4x1x11/4 | 45 | 45 | 42 | 0.43 | 50X32X50 | 2x11/4x2 | 58 | 58 | 54 | 1.04 |
| 32X20X15 | 11/4x3/4x1/2 | 40 | 43 | 37 | 0.35 | 50X40X50 | 2x11/2x2 | 58 | 58 | 55 | 1.09 |
| 32X20X25 | 11/4x3/4x1 | 40 | 42 | 36 | 0.51 | 50X40X15 | 2x11/2x1/2 | 38 | 48 | 36 | 0.65 |
| 32X25X20 | 11/4x1x3/4 | 36 | 41 | 35 | 0.41 | 50X40X20 | 2x11/2x3/4 | 40 | 50 | 39 | 0.65 |
| 40x20x20 | 11/2x3/4x3/4 | 38 | 43 | 32 | 0.44 | 50X40X25 | 2x11/2x1 | 44 | 52 | 42 | 0.76 |
| 40x25x25 | 11/2x1x1 | 42 | 46 | 38 | 0.53 | 50X40X32 | 2x11/2x11/4 | 48 | 54 | 46 | 0.84 |
| 40x32x32 | 11/2x11/4x11/4 | 46 | 48 | 45 | 0.65 | 65X50X50 | 21/2x2x2 | 61 | 66 | 57 | 1.91 |
| 40x15x40 | 11/2x1/2x11/2 | 50 | 50 | 42 | 0.61 | 65X40X65 | 21/2x11/2x21/2 | 69 | 69 | 64 | 1.7 |
| 40X20X40 | 11/2x3/4x11/2 | 50 | 50 | 44 | 0.63 | 65X50X65 | 21/2x2x21/2 | 67 | 67 | 65 | 1.91 |